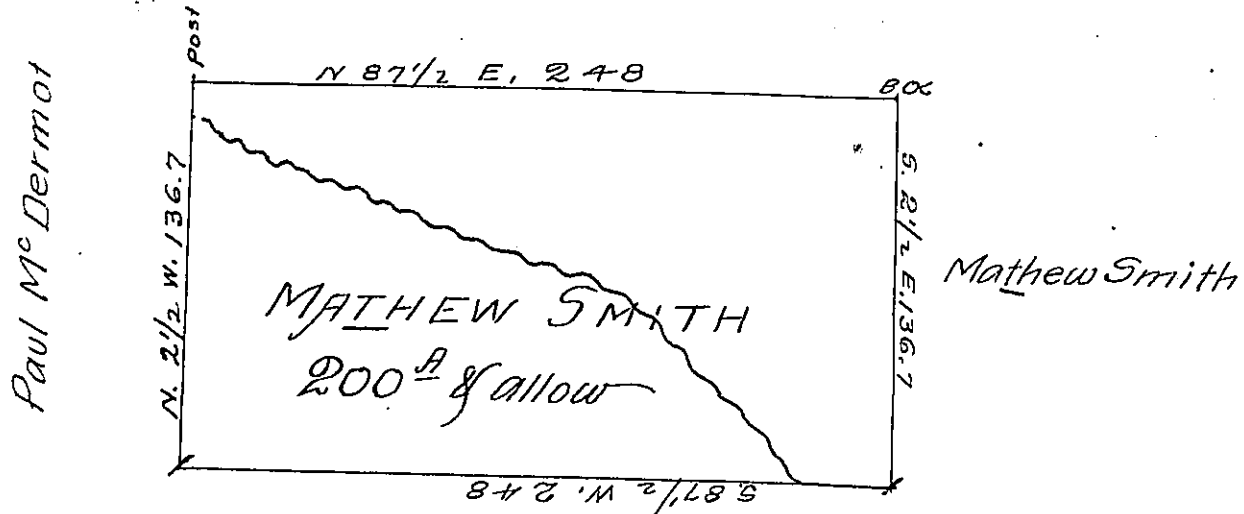


Mathew Smith



part of the same tract

Draft of a peice of Land Situate in Denegoll township Butler County
 pa on the waters of Bear Creek containing Two hundred acres
 and allowance. Surveyed for Mathew Smith on the 21th Nov 1827
 at the instance of James Walker

Hugh Conway D.S.

I T.H. Lyon Certify that the above is a true copy as taken
 from the Survey Book of Hugh Conway

T.H. Lyon D.S.

Jan. 30th 1837

John Lukens Esq.
 Surveyor General

IN TESTIMONY that the above is a copy of the original remaining on file in
 the Department of Internal Affairs of Pennsylvania, made
 comformably to an Act of Assembly approved the 16th day of
 February 1833, I have hereunto set my hand and caused
 the Seal of said Department to be affixed at Harrisburg,
 this twenty-fourth day of January 1907

Isaac B. Brown
 Secretary of Internal Affairs.